

San Francisco Homeless Services Provider Conference

December 2018



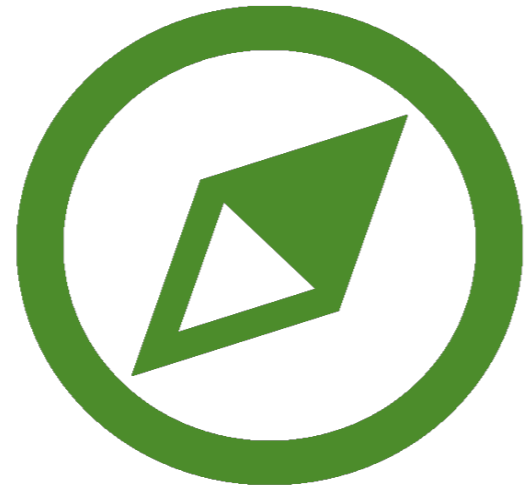
Only
together
can we
solve
homelessness



San Francisco has been a pioneer



Permanent Supportive Housing



Navigation Centers



Homeward Bound



Rapid Rehousing



Homeless Outreach Teams



Heading Home & Rising-Up Campaigns



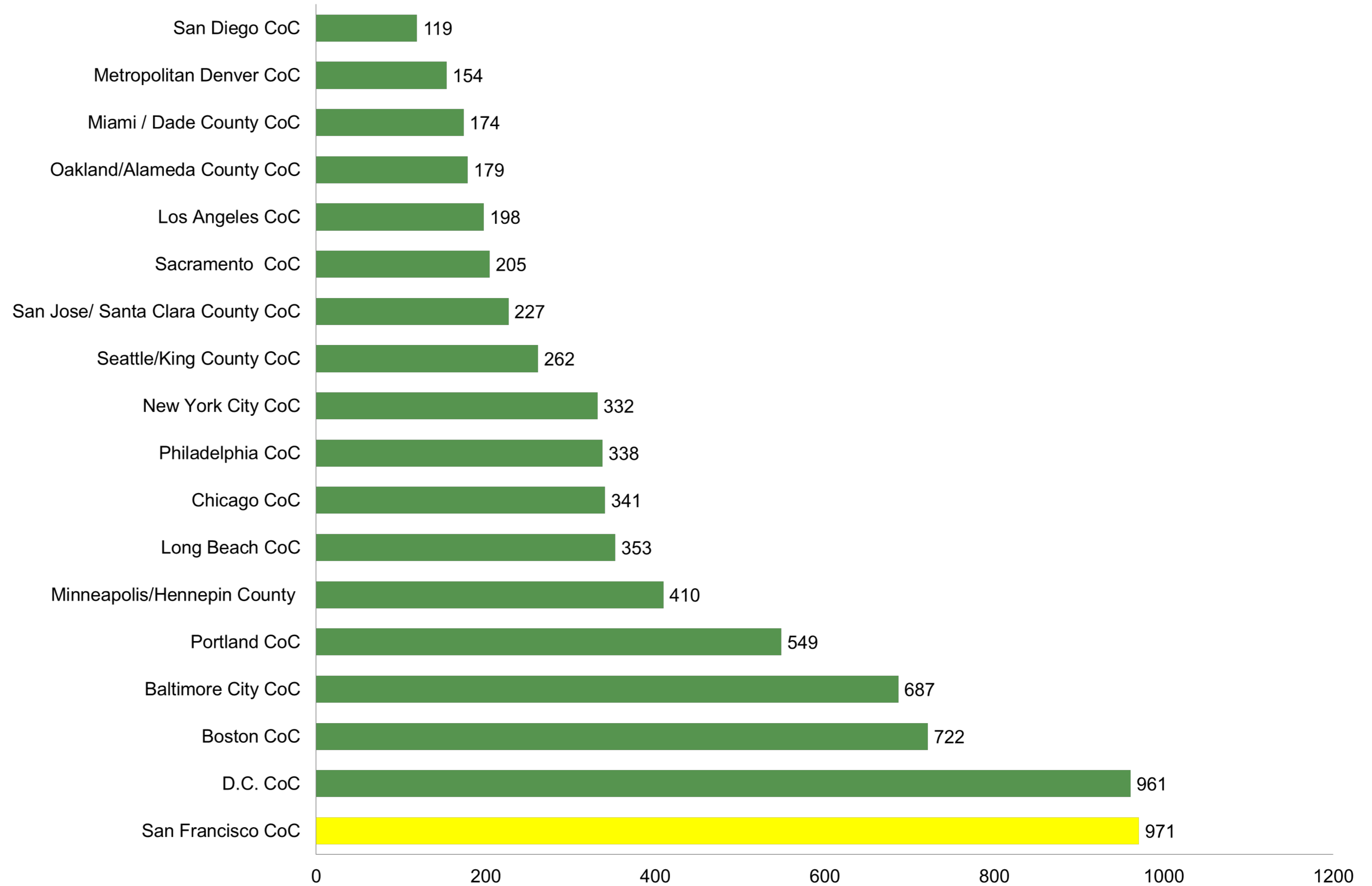
Jazzie's Place

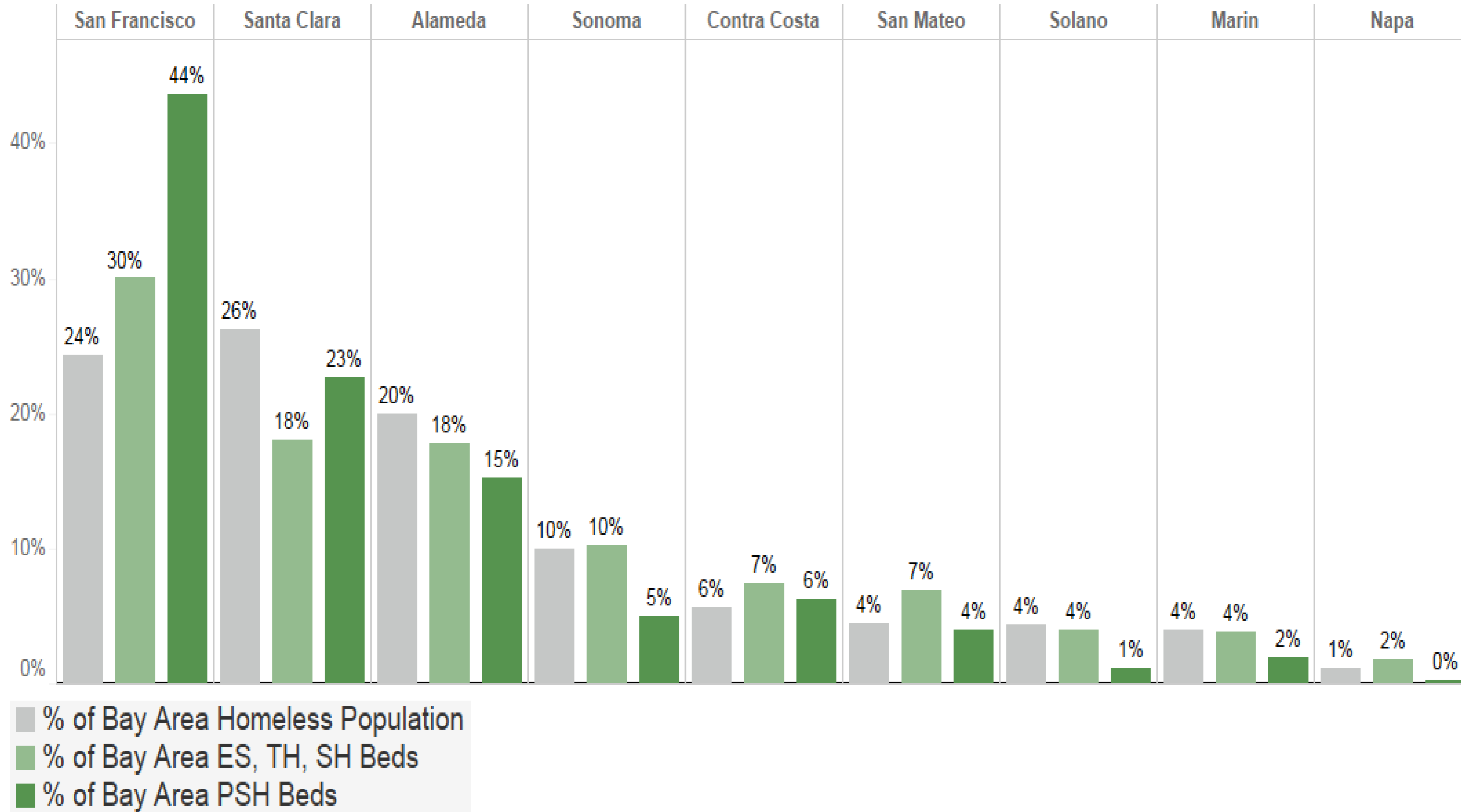


Project Homeless Connect

Total PSH Units Per 100K Residents, 2017

San Francisco has more units of PSH per capita than any city in the USA



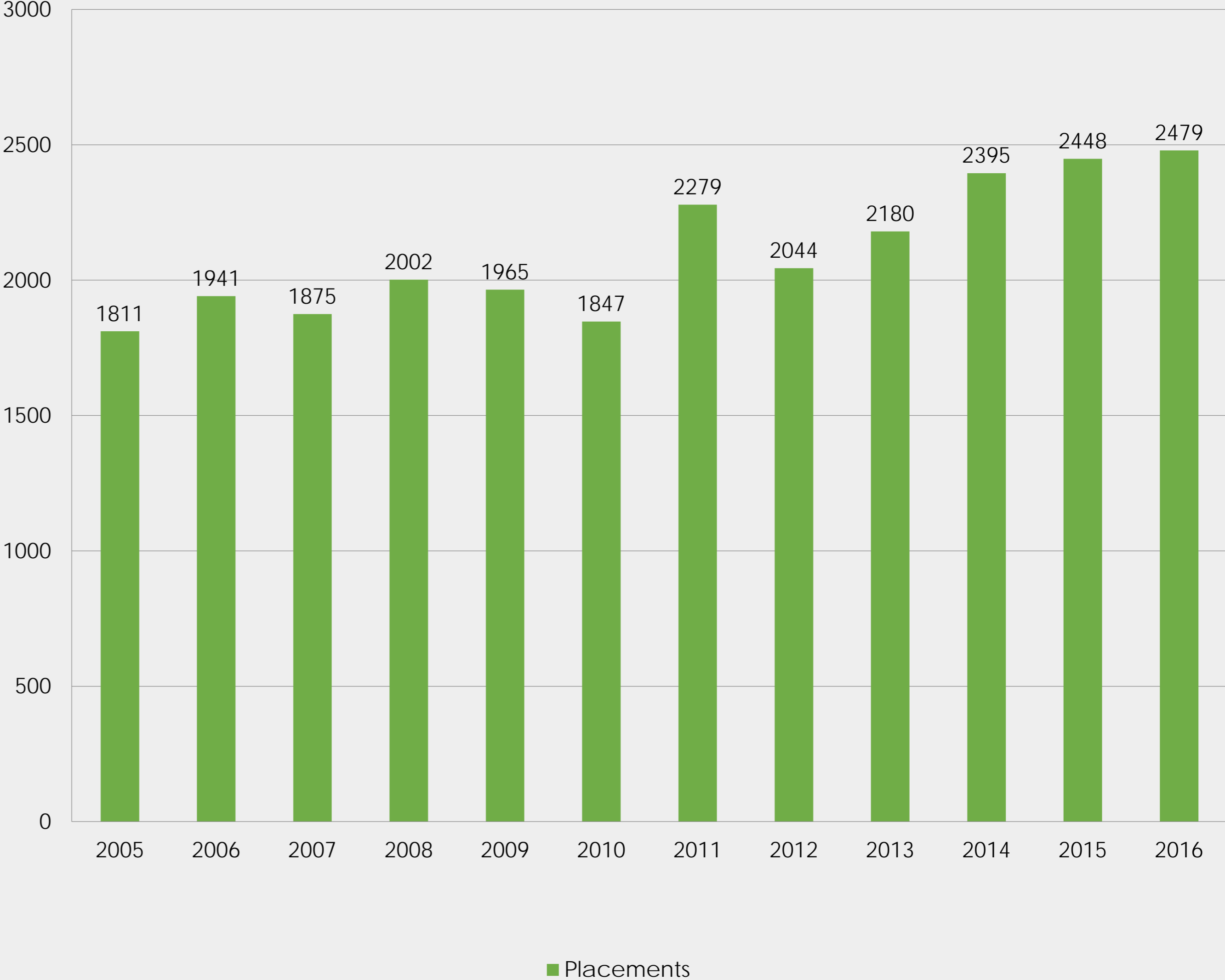


San Francisco has more temporary shelter than any Bay Area community

And we've placed more and more people

Thanks to your work, our system helps **50 people** exit homelessness every week

Placements Out of Homelessness
2005-2016



Impact between 2015 and 2017

Population	% ↓ btw 2015-17
Youth Homelessness	13%
Family Homelessness	12%
Chronic Homelessness Among Veterans	30%

Community	2017 PIT Total	% Change from 2015-2017
San Francisco City & County	7,499	<-1%
Orange County	4,792	8%
Portland/ Multnomah County	4,177	9%
Santa Clara County	7,395	13%
Seattle/King County	11,643	16%
Sacramento County	3,665	30%
Los Angeles County	57,749	30%
Alameda County	5,629	39%

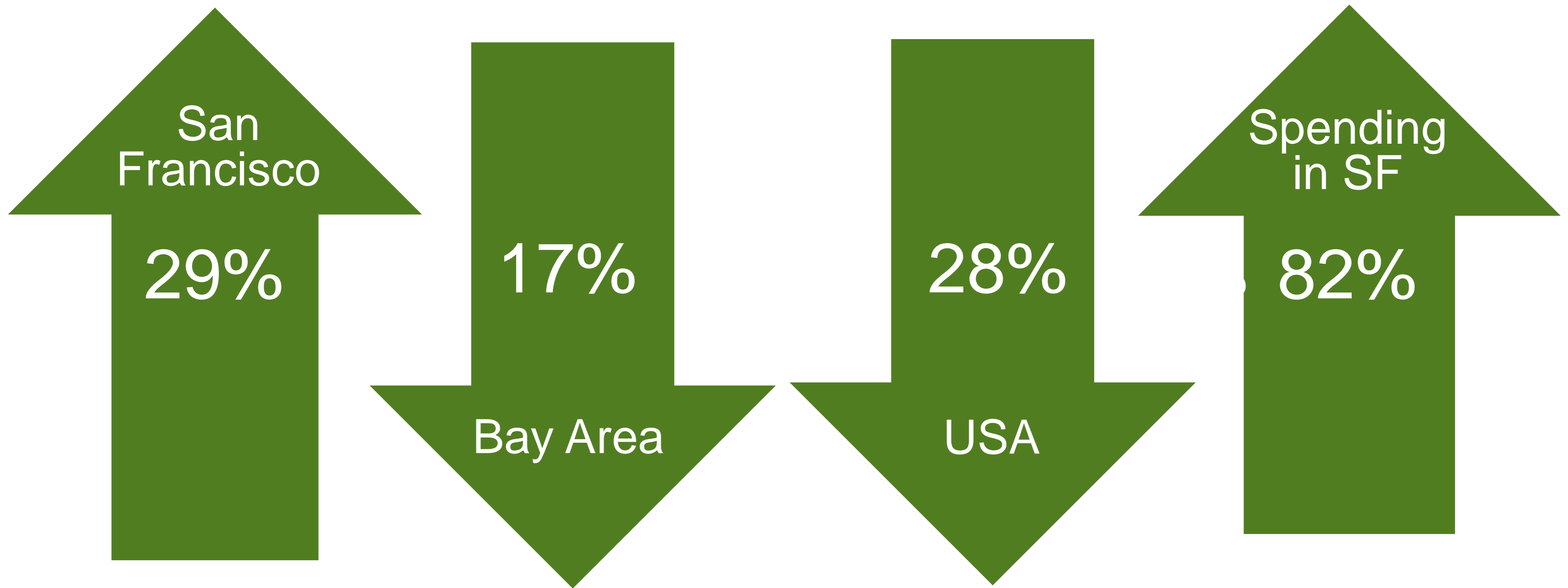
San Francisco has done well compared to other west coast cities

We should
celebrate our
success...



...but we need to do better

Homelessness From 2005 to 2016





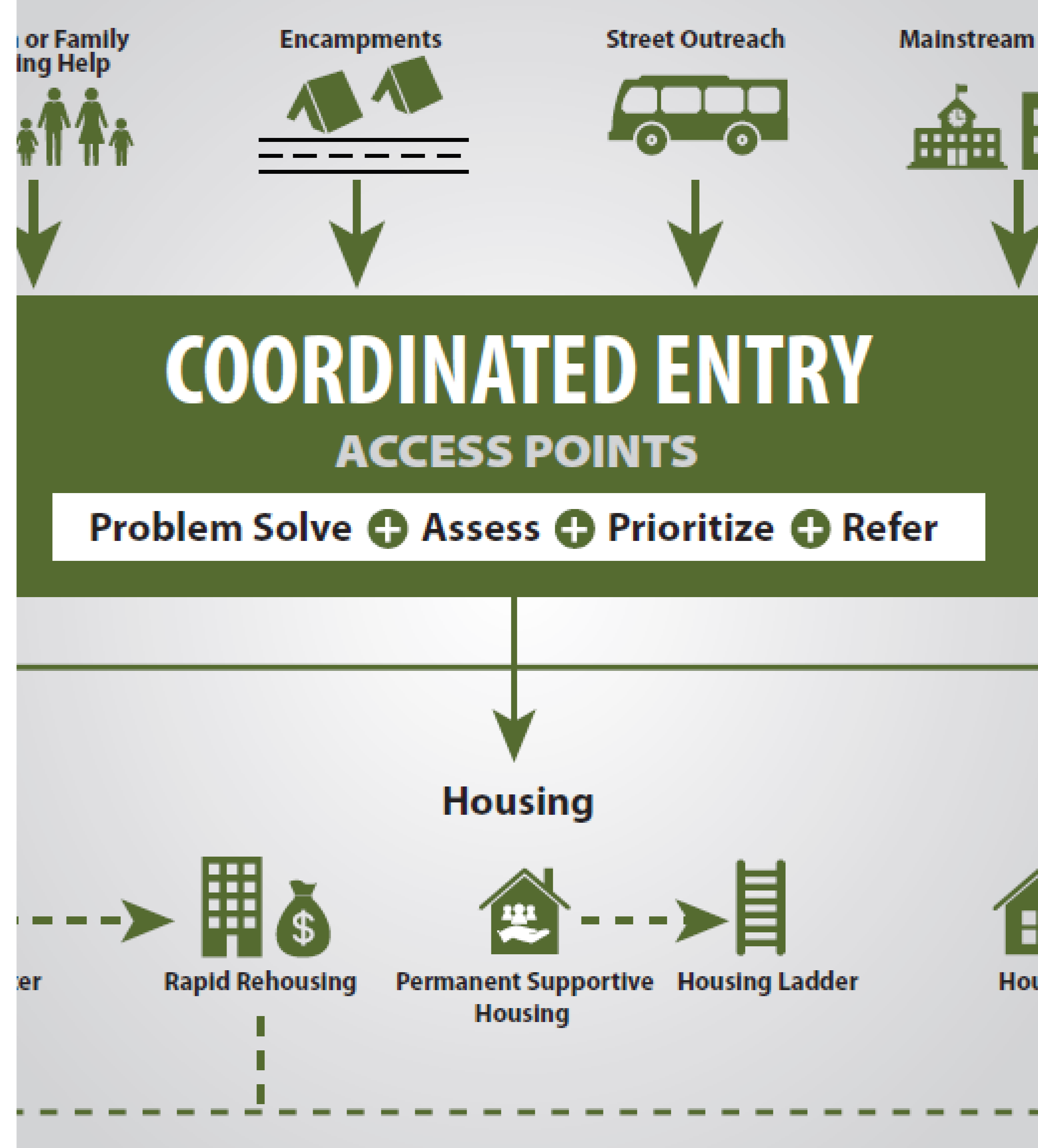


There is no
single reason.

Some are outside
of our control.

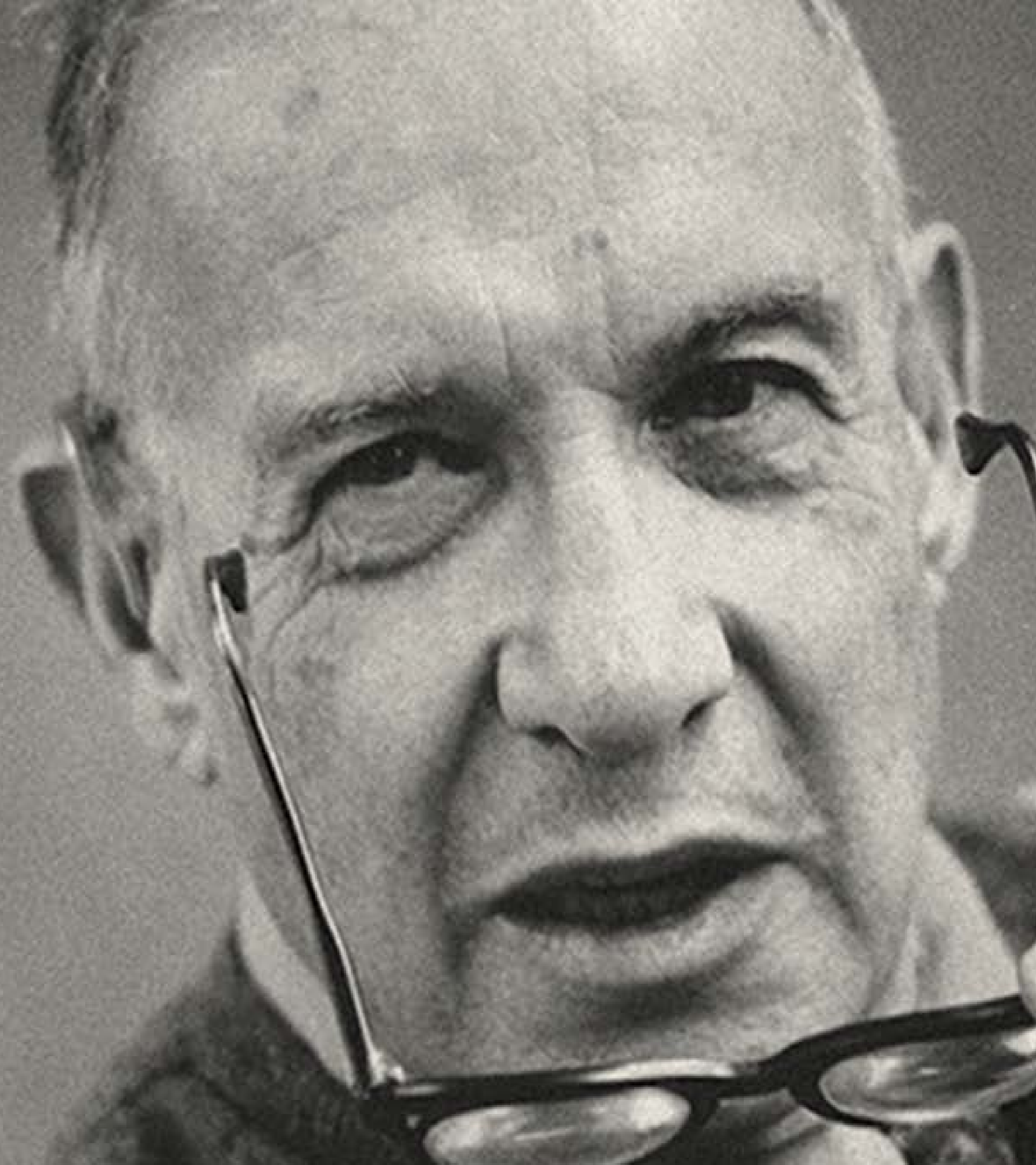
But others
are not.

We have a new strategy to address some of these challenges



But “culture
eats strategy
for breakfast”

-Peter Drucker



San Francisco Homeless Services Provider Conference

December 2018



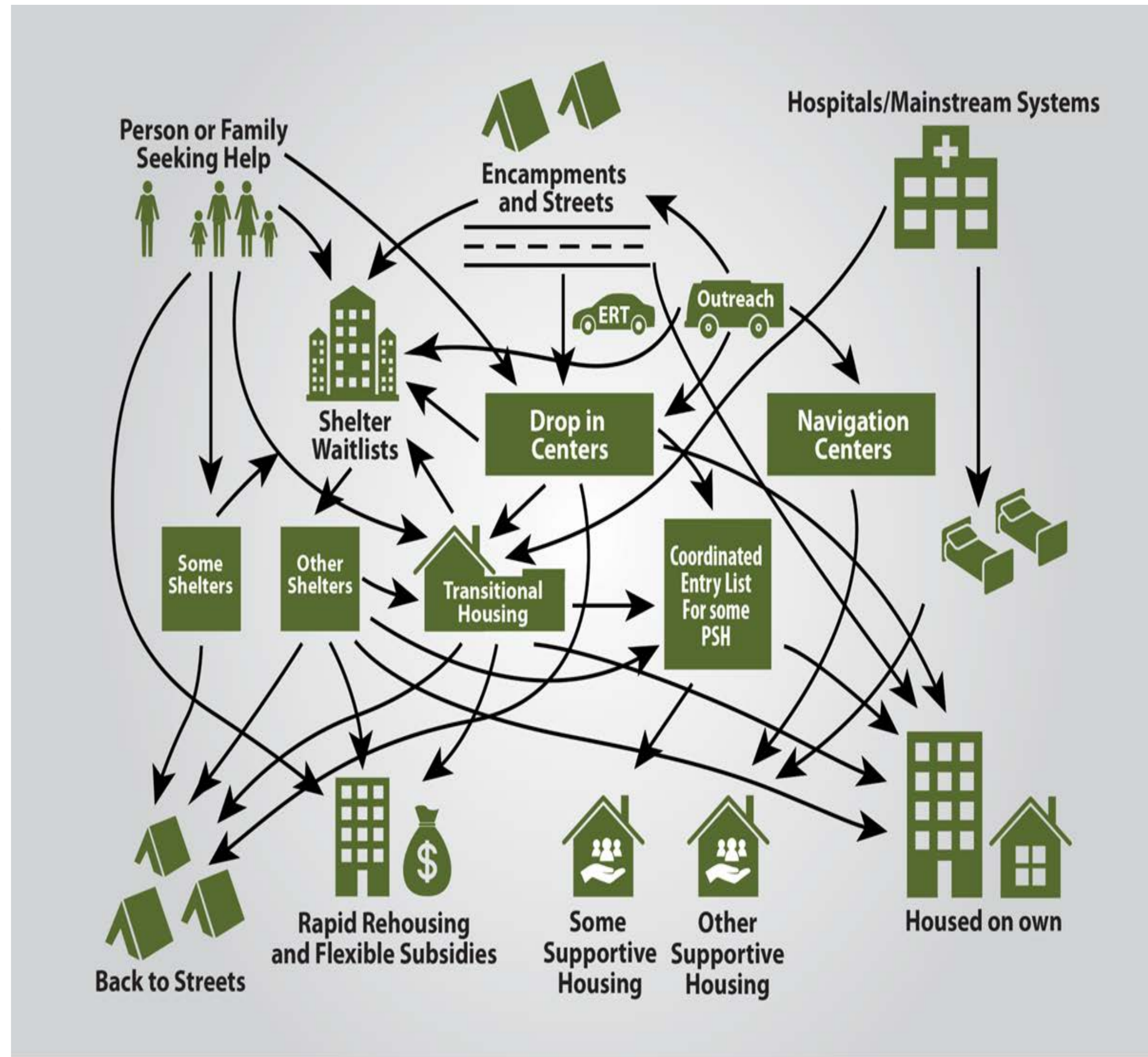




How do we move from
us vs. them to.....

Just US?

Our service delivery system has not effectively served our clients or the City



How do we improve the way we work with our clients to reflect their reality and the reality of resource constraints?

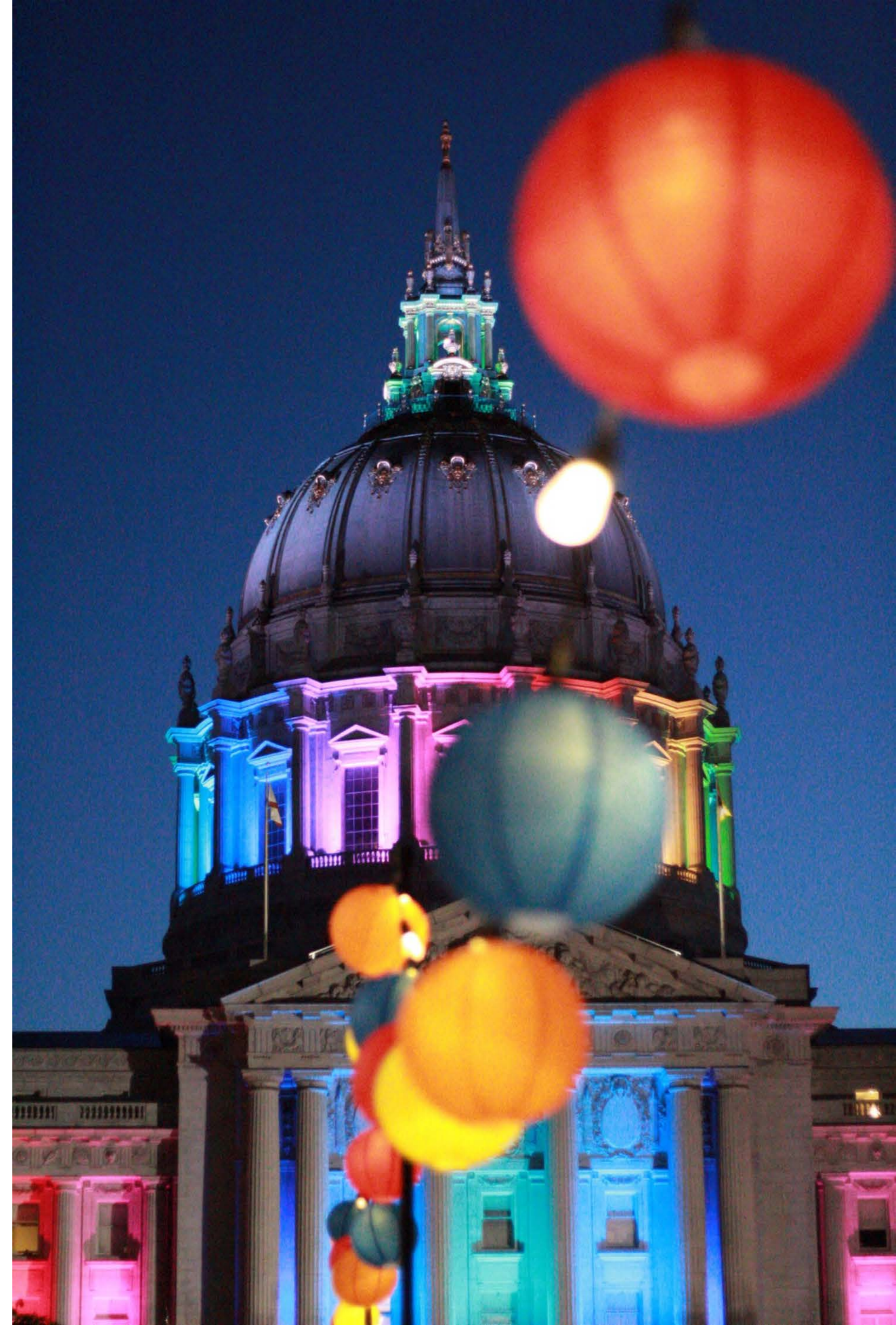


Black people
comprised 5.5% of the
general population &
40.1% of the homeless
population

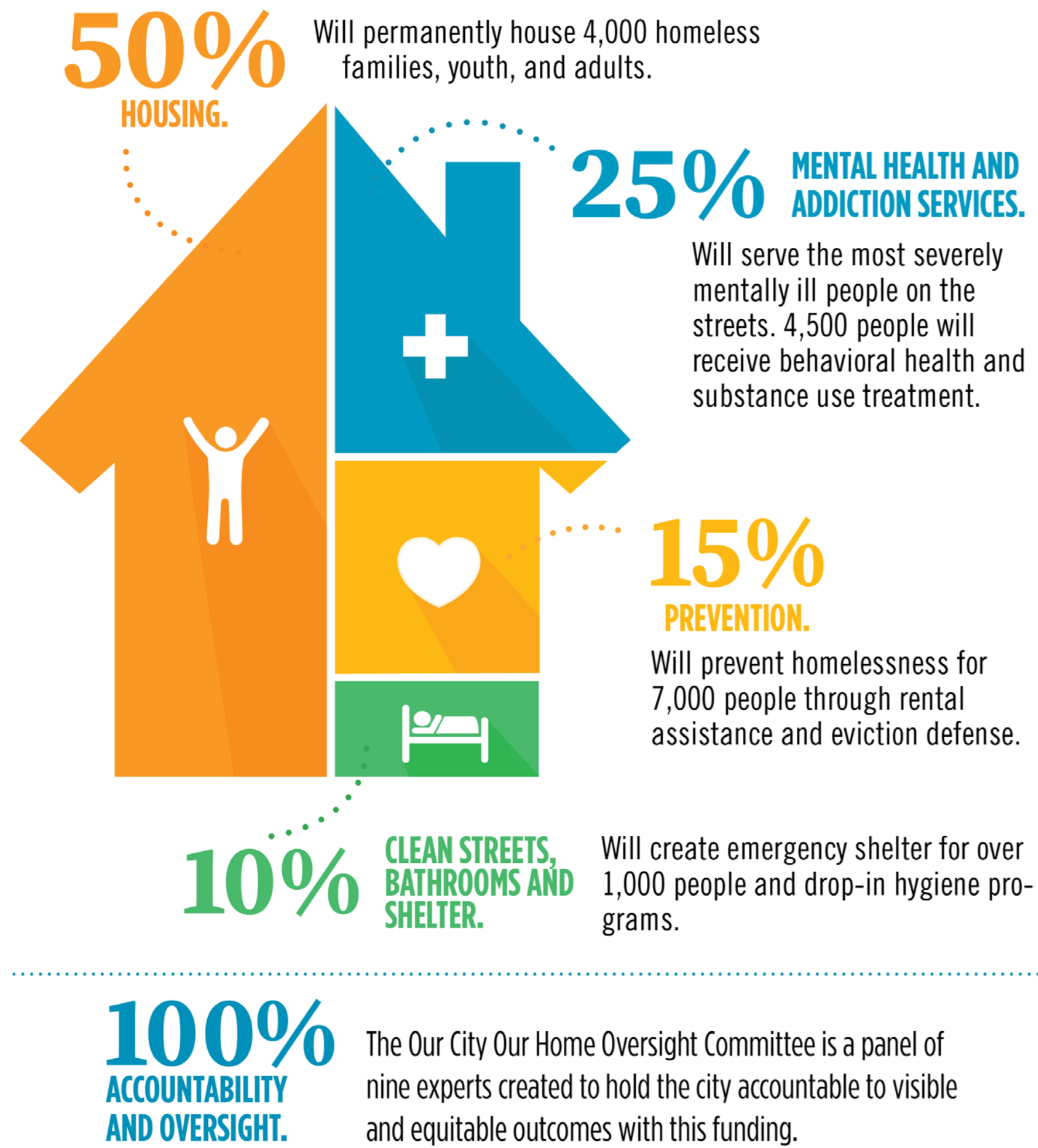
White people
constituted 48.7% of
the general population,
and 44.2% of
the homeless
population

Issues of equity
are critical
to our work

How do we build
diversity, equity and
inclusion in the face of
a humanitarian crisis?



Game Changer



The stakes are higher with the passage of Proposition C

When we've been told we're not ready, or that we shouldn't try, or that we can't, generations of Americans have responded with a simple creed that sums up the spirit of a people: 'Yes We Can'



Thank
you!