



DEPARTMENT OF
HOMELESSNESS AND
SUPPORTIVE HOUSING

Homeless Family System

Marion Sanders, MPA, MSW
Chief Deputy Director

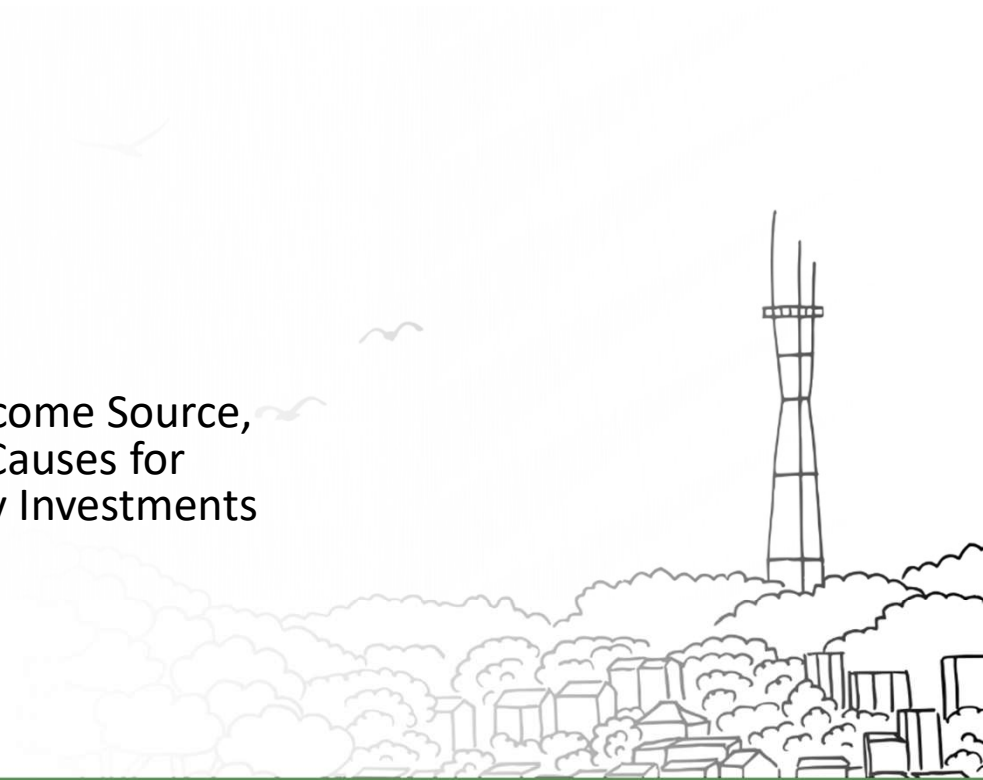




DEPARTMENT OF
HOMELESSNESS AND
SUPPORTIVE HOUSING

Family Landscape

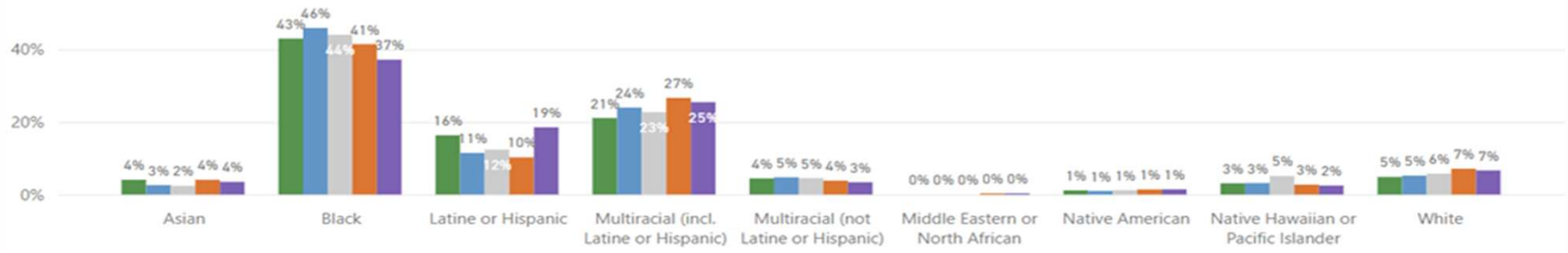
Data & Demographics, Geographic Spread, Primary Income Source, Housing Affordability, Area Median Income, Primary Causes for Homelessness, Funded Resources, HSH Budget, Family Investments



Family Demographics: Race & Ethnicity, Sexual Orientation, & Gender Identity

Percent by Race & Ethnicity

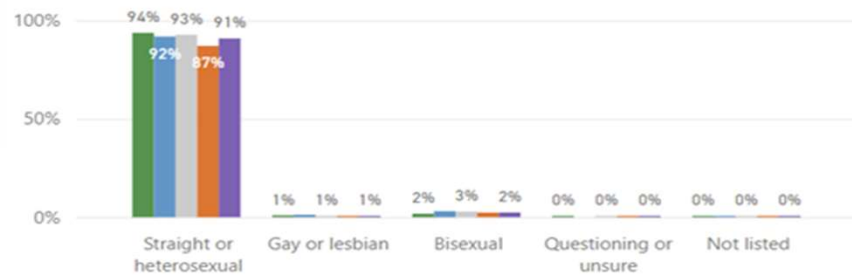
Fiscal Year ● FY 2019-20 ● FY 2020-21 ● FY 2021-22 ● FY 2022-23 ● FY 2023-24



Race and ethnicity are incomplete for 2% of clients (1% Data Not Collected; 0% Doesn't Know / Prefer Not to Answer)

Percent by Sexual Orientation

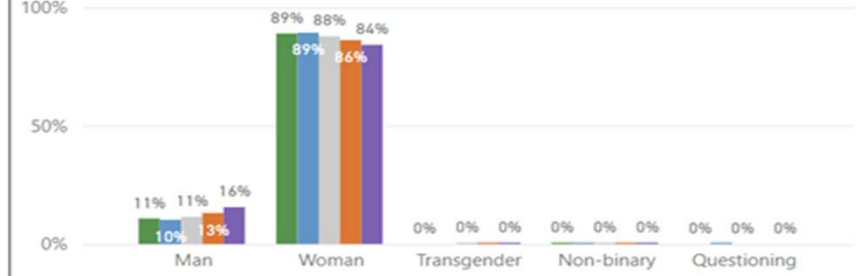
Fiscal Year ● FY 2019-20 ● FY 2020-21 ● FY 2021-22 ● FY 2022-23 ● FY 2023-24



Sexual Orientation is incomplete for 6% of clients (5% Data Not Collected; 0% Prefer Not to Answer)

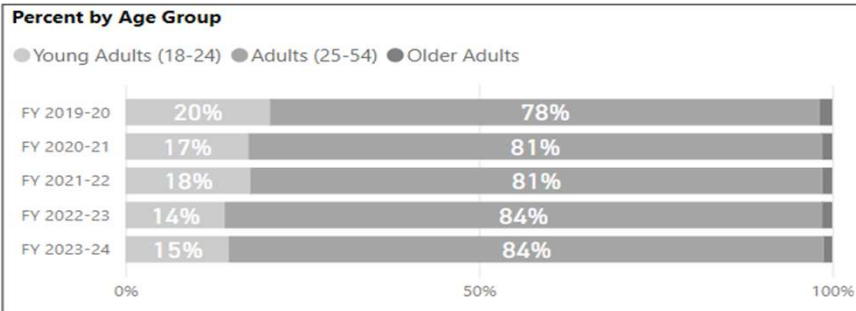
Percent by Gender Identity

Fiscal Year ● FY 2019-20 ● FY 2020-21 ● FY 2021-22 ● FY 2022-23 ● FY 2023-24



Gender is incomplete for 0% of clients (0% Data Not Collected; 0% Doesn't Know / Prefer Not to Answer)

Family Demographics: Age

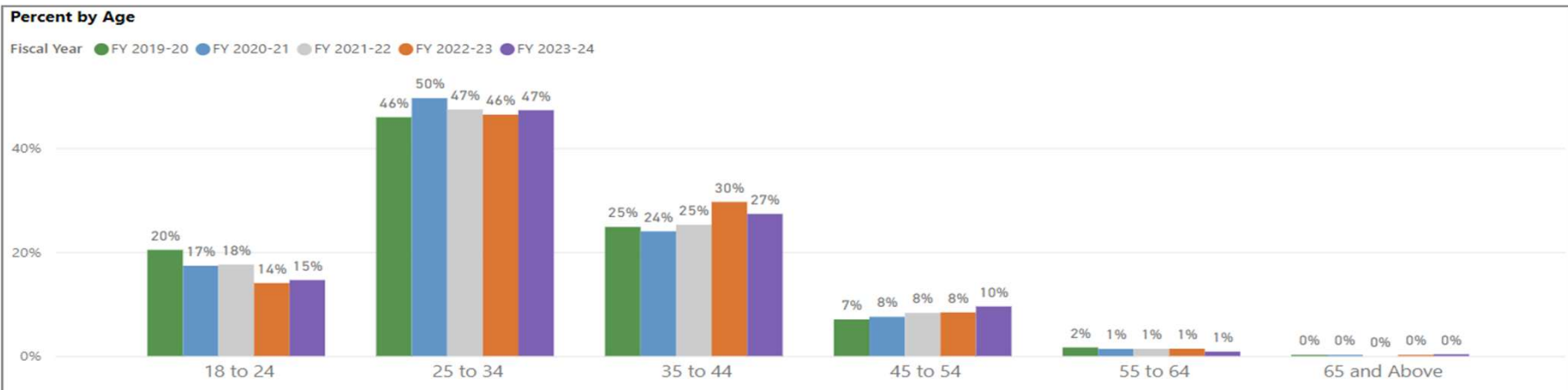


Age Group Definitions

Young Adults (18-24): Heads of household aged 18 to 24.

Adults (25-54): Heads of household aged 25 to 54.

Older Adults: Heads of household aged 55 and above.



Demographics: Geographic Spread of Sheltered & Unsheltered Homelessness

Figure 4. COMPLETE HOMELESS POINT-IN-TIME COUNT POPULATION BY DISTRICT AND SHELTER STATUS, 2017-2022

District	2017			2019			2022		
	Sheltered	Unsheltered	Total	Sheltered	Unsheltered	Total	Sheltered	Unsheltered	Total
1	61	370	431	41	204	245	26	195	221
2	0	53	53	0	171	171	49	109	158
3	65	293	358	63	278	341	215	176	391
4	0	31	31	0	34	34	13	68	81
5	230	143	373	180	183	363	353	344	697
6	1,601	1,723	3,324	1,666	1,990	3,656	1,952	1,896	3,848
7	17	74	91	27	141	168	4	159	163
8	24	236	260	22	295	317	106	181	287
9	242	281	523	386	257	643	142	522	664
10	107	1,101	1,208	313	1,528	1,841	428	687	1,115
11	0	48	48	0	99	99	0	60	60
Confidential/ Scattered Site Locations in SF	158	0	158	157	0	157	69	0	69
Total	2,505	4,353	6,858	2,855	5,180	8,035	3,357	4,397	7,754
% of Total	37%	63%	100%	36%	64%	100%	43%	57%	100%

Note: The table displays data per 2012 Supervisorial District lines.
 Note: All of Golden Gate Park is included in the District 1 reporting for 2017 and 2019.

Family Primary Income Sources

Income (Yes/No) by Source for Families with Active Coordinated Entry Enrollments in 2023				Average Income by Source for Families with Active Coordinated Entry Enrollments in 2023	
Average Income by Source	Households with Income	% of Total Households with Income		Average Income by Source	Average Amount
Earned_Income	529	26%		Avg_Earned_Income	\$ 2,257.93
Unemployment_Insurance	28	1%		Avg_Unemployment_Insurance	\$ 1,503.00
Supplemental_Security_Income_SSI	55	3%		Avg_Supplemental_Security_Income_SSI	\$ 1,090.43
VA_Service_Connected_Disability_Compensation	1	0%		Avg_VA_Service_Connected_Disability_Compensation	\$ 4,072.00
VA_Non_Service_Connected_Disability_Pension	0	0%		Avg_VA_Non_Service_Connected_Disability_Pension	NULL
Private_Disability_Insurance	1	0%		Avg_Private_Disability_Insurance	\$ 500.00
Workers_Comp	3	0%		Avg_Workers_Comp	\$ 1,208.00
CalWORKS	794	39%		Avg_CalWORKS	\$ 918.51
Social_Security	0	0%		Avg_CAAP	\$ 554.78
CAAP	9	0%		Avg_Social_Security	NULL
Private_Pension	1	0%		Avg_Private_Pension	\$ 1,000.00
Child_Support	42	2%		Avg_Child_Support	\$ 591.25
Alimony	6	0%		Avg_Alimony	\$ 696.83
Other_Income	39	2%		Avg_Other_Income	\$ 1,348.60
Income (Any)	1402	70%		Avg_Total_Income	\$ 1,553.13

Housing Affordability in San Francisco

- Average hourly rate needed to afford a 1 bedroom apartment--> \$51.25
- Average hourly rate needed to afford a 2 bedroom apartment--> \$61.31
- Minimum wage in San Francisco is \$18.07 per hour and will increase to \$18.67 July 1, 2024
- The Metropolitan San Francisco Bay Area has 196,475 extremely low income renter households and 61,248 affordable and available rentals

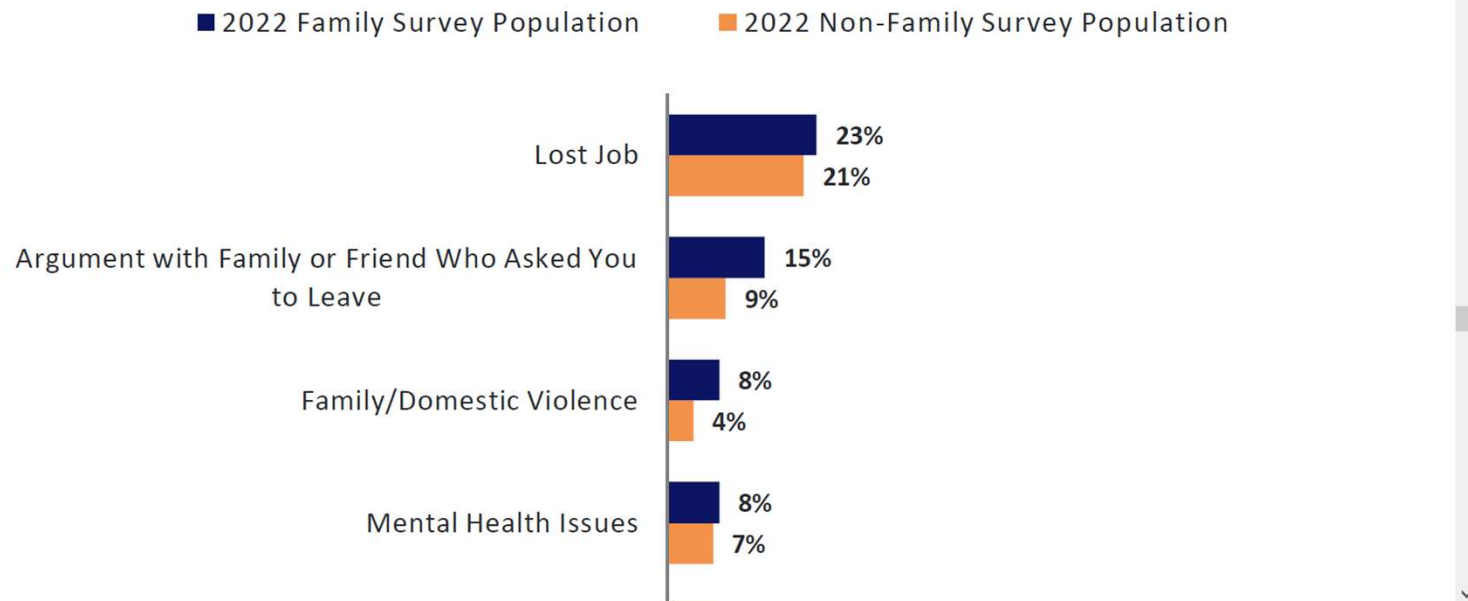
Area Median Income: San Francisco

FY 2023 Income Limits Summary

FY 2023 Income Limit Area	Median Family Income Click for More Detail	FY 2023 Income Limit Category	Persons in Family							
			1	2	3	4	5	6	7	8
San Francisco, CA HUD Metro FMR Area	\$175,000	Very Low (50%) Income Limits (\$) Click for More Detail	65,050	74,350	83,650	92,900	100,350	107,800	115,200	122,650
		Extremely Low Income Limits (\$)* Click for More Detail	39,050	44,600	50,200	55,750	60,250	64,700	69,150	73,600
		Low (80%) Income Limits (\$) Click for More Detail	104,100	118,950	133,800	148,650	160,550	172,450	184,350	196,250

Primary Causes for Homelessness Among Families

Figure 45. PRIMARY CAUSE OF HOMELESSNESS AMONG **FAMILIES** WITH CHILDREN (TOP 3 RESPONSES IN 2022)



San Francisco Homelessness Count and Survey, 2022 Report, ASR

Funded Resources

- Three access points (Central City, Bayview, Mission)
- Two congregate shelters (109 beds /36 families) (Hamilton; BVHM)
- Six non-congregate (158 units) (Compass; Hamilton; Harbor House; HPP; Providence; St. Joseph)
- Two Urgent Accommodation Programs(Compass; St Vincent De Paul)
- Three transitional housing programs (50 units)
- RRH slots (290)
- DV RRH slots (63)
- Flex Pool slots (170)
- Housing Ladder slots (70)
- EHV slots (249)
- DV EHV slots (136)
- Behavioral Health-(Compass Families)
- Ancillary supportive services

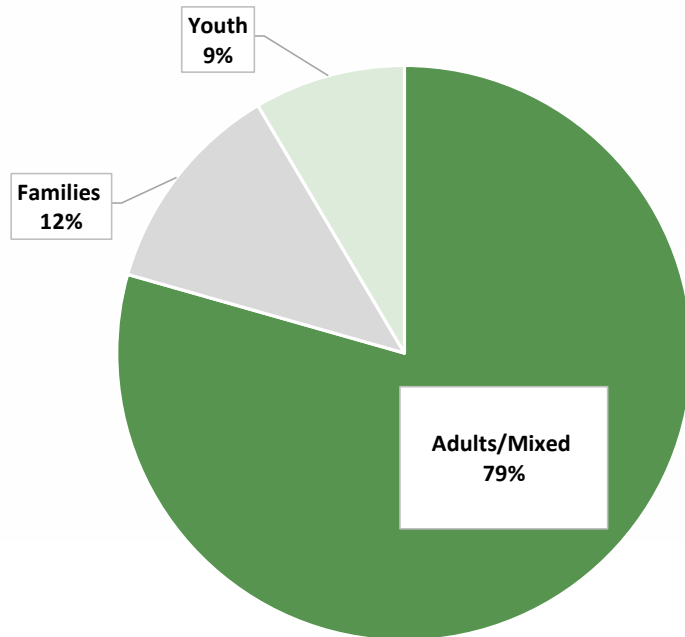
HSH Budget

\$ in millions	FY22-23 Adopted	FY23-24 Adopted	% Change from FY23	FY24-25 Adopted*	% Change from FY25
Total Budget	\$672.0	\$713.3	6.1%	\$689.4	-3.3%
<i>Revenue</i>	<i>\$387.0</i>	<i>\$411.2</i>	6.3%	<i>\$308.8</i>	-24.9%
<i>General Fund</i>	<i>\$285.0</i>	<i>\$302.1</i>	6.0%	<i>\$380.6</i>	26.0%

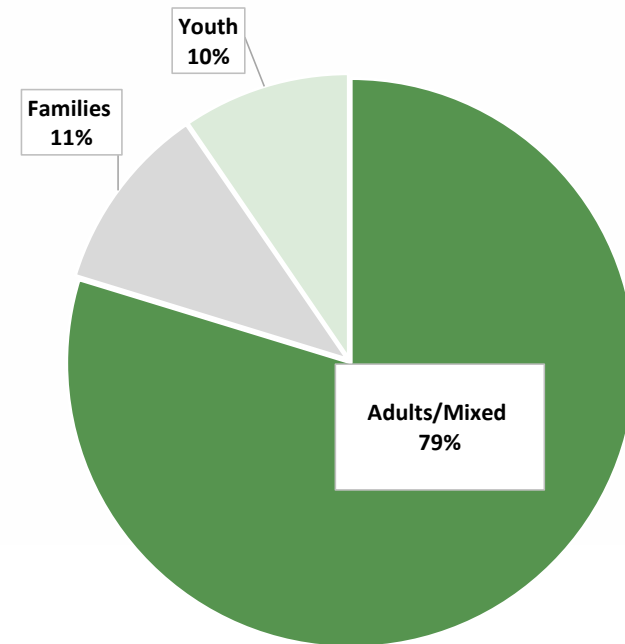
**This is not yet reflective of the FY24-25 and FY25-26 budget process*

Approved FY23-24 and FY24-25 Budget By Population

FY2023-24 Adopted Budget by Population



FY2024-25 Adopted Budget by Population



Recent Investments in Families

FY23-25 HSH Adopted Budget

- \$6.4M for the continuation of operations and services at recently acquired and opened **~240 units** of family supportive housing.
- \$3M for 60 new **Family shallow subsidies** for housing.
- Long-term commitment to continue operations of the **Oasis Family Shelter**.
- **\$1.2M for the expansion of hours** at Buena Vista Horace Mann Family Shelter.
- \$1M in continued support for **191 Families** placed in **Emergency Housing Vouchers**.

FY24-26 HSH Dept Request*

- \$20 million for 85-100, 5-year Rapid Rehousing subsidies (approx \$47,000 per family per year).

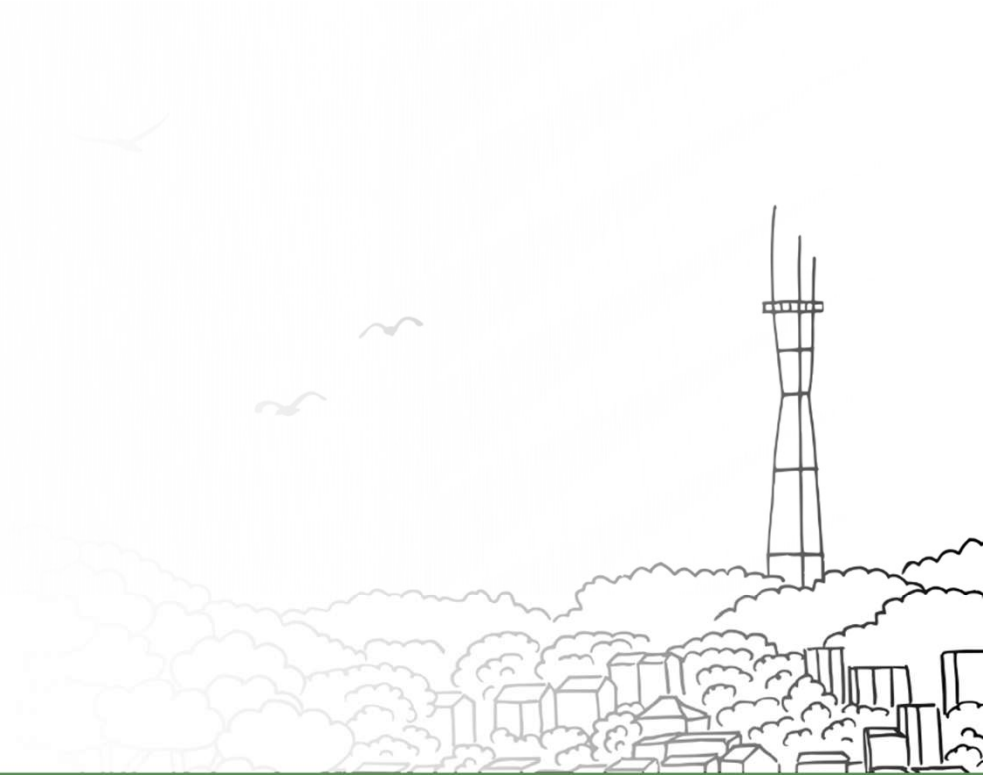
** Budget Proposal not yet adopted by Mayor's Office and Board of Supervisors*



DEPARTMENT OF
HOMELESSNESS AND
SUPPORTIVE HOUSING

Family Coordinated Entry (CE)

History, Definitions, Access & Services



Family CE History

- 2016--> Planning for Family CE
- 2017--> Recommendations for a new family CE were adopted and launched
- Late 2021--> two phase approach to evaluate and redesign San Francisco's Coordinated Entry (all three populations)
- 2022-->CE revision process underway
- 2023-->August 2023 Implementation committee launched; December 2023 subcommittees launched
- 2024--->Anticipated December redesign finalized

Family Definition of Homelessness

1. At least one Adult/TAY with a minor child in their legal & physical custody or care;
 - Includes: Pregnant persons; those in the reunification process w/Child Protective Services
2. Connection to San Francisco (time spent homeless, enrollment in SFUSD, ward of SF); and
3. Meets HUD definition of homelessness (Categories 1,2&4); or
4. Families living in an SRO

Family Access Points & Services

Access

- Brick and mortar access points
- Mobile Access Outreach & Transportation

Services

- Triage
- Eligibility Assessment
- Problem Solving
- Temporary Shelter and Emergency Housing Placement
- Housing Assessment & Prioritization
- Housing Navigation (limited)
- Referrals to CBOs



DEPARTMENT OF
HOMELESSNESS AND
SUPPORTIVE HOUSING

The COVID Effect



COVID

- Paused Shelter length of stay
- Opened a shelter in place (SIP) hotel to serve families
- Oasis Family Shelter opened (50 unit hotel) to serve families- now has a 54 unit capacity and an long term operational commitment from HSH
- Significant rise in Latinx homelessness
- 17% of all respondents (regardless of target population) to the 2022 PIT count survey indicated that COVID was the cause of their current episode of homelessness



DEPARTMENT OF
HOMELESSNESS AND
SUPPORTIVE HOUSING

System Change

System reforms, System Gaps, and Home by the Bay



System Reforms

In Progress

- Family System Policy Reforms
- Family System Pain Points

On the Horizon

- Community-led changes to Coordinated Entry, including
 - Broaden access point accessibility
 - Increase training, coaching and career development for coordinated entry staff
 - Innovate around how to identify each family's needs
 - Review how to prioritize families
 - Refine how to match families to housing resources

System Gaps

- Newcomer support
- Robust Inter"City" departmental strategy on ending family homelessness
- Messaging that tells an accurate story about what resources are available city wide and how to access them
- Upstream prevention that catches families before they fall
- Lack of shelter beds
- Lack of affordable housing; lack of the understanding of the existing affordable housing pipeline
- Career Planning & Job placement pipeline
- Education development
- Robust mental health strategy
- Continuum of services for the entire family

Home By The Bay

A plan for all San Francisco that includes focus on

- Equity and Housing Justice
- Performance Measurement
- Improved Standard of Care
- Solutions tailored to vehicular homelessness
- Shelter expansion & improvement
- Permanent housing expansion & improvement
- Tailored prevention services
- Support for survivors of interpersonal violence
- Support for justice-involved individuals

Questions?